

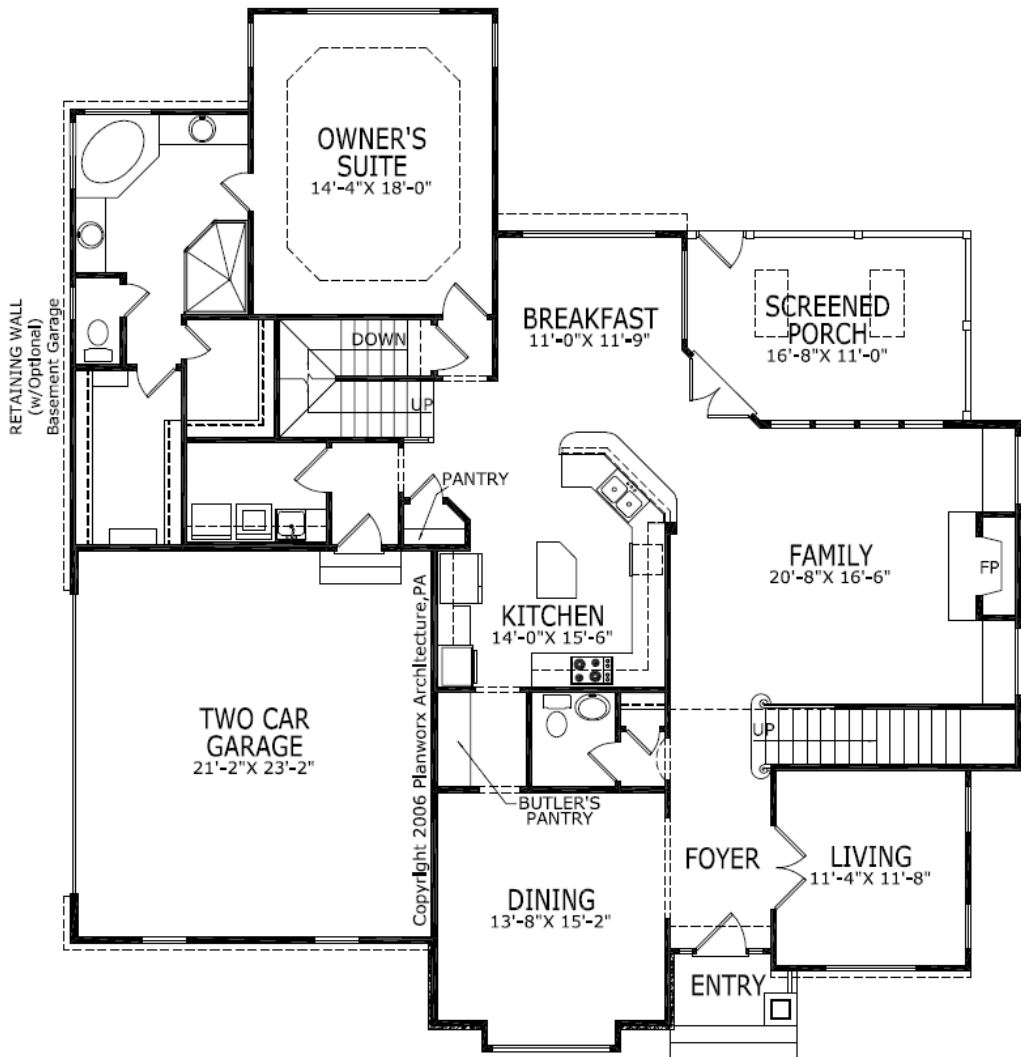


3334 Hillsborough St
Raleigh, NC 27607

919-821-7032

WYNFIELD

First Floor



First Floor	2,061 Sq Ft
Second Floor	1,749 Sq Ft
Basement (Future)	984 Sq Ft
Total Livable Sq Ft	3,810 Sq Ft
1 Car Garage	298 Sq Ft
2 Car Garage	509 Sq Ft

Overall Dimensions 57'-5" x 62'-6"

Floor Plan Copyright ©2006 Planworx Architecture, PA
Phelps-Dickson Builders, LLC



In an effort to continually improve our product we reserve the right to change specifications at any time without notice. Floor Plans may vary depending on elevations. Actual home may be the mirror image of floor plan shown depending on lot conditions. Measurements are approximate and may vary depending on options. Elevations are artist's renditions and should not be relied upon for specific details.